



**India Meteorological Department  
(Ministry of Earth Sciences)**

**BULLETIN NO.38: (ARB/01/2021)**

**TIME OF ISSUE: 0745 HOURS IST**

**DATED: 19.05.2021**

**FROM: INDIA METEOROLOGICAL DEPARTMENT (FAX NO. 24643965/24699216/24623220)**

**TO: CONTROL ROOM, NDM, MINISTRY OF HOME AFFAIRS (FAX.NO. 23092398/23093750)**

**CONTROL ROOM NDMA (FAX.NO. 26701729)**

**CABINET SECRETARIAT (FAX.NO.23012284, 23018638)**

**PS TO HON'BLE MINISTER FOR S & T AND EARTH SCIENCES (FAX NO.23316745)**

**SECRETARY, MOES (FAX NO. 24629777)**

**H.Q. (INTEGRATED DEFENCE STAFF AND CDS) (FAX NO. 23005137/23005147)**

**DIRECTOR GENERAL, DOORDARSHAN (23385843)**

**DIRECTOR GENERAL, AIR (23421101, 23421105, 23421219)**

**PIB MOES (FAX NO. 23389042)**

**UNI (FAX NO. 23355841)**

**D.G. NATIONAL DISASTER RESPONSE FORCE (NDRF) (FAX NO. 26105912, 2436 3260)**

**DIRECTOR, PUNCTUALITY, INDIAN RAILWAYS (FAX NO. 23388503)**

**CHIEF SECRETARY, GUJARAT (FAX NO. 079-23250305)**

**CHIEF SECRETARY, DAMAN & DIU (FAX NO. 0260-2230775)**

**CHIEF SECRETARY, DADRA & NAGAR HAVELI (FAX NO. 0260-2645466)**

**CHIEF SECRETARY, RAJASTHAN (FAX NO. 0141-2227114)**

**Subject: Deep Depression (remnant of the Extremely Severe Cyclonic Storm "Tauktae" ) weakened into a Depression over south Rajasthan and adjoining Gujarat region**

The **Deep Depression (remnant of the Extremely Severe Cyclonic Storm "Tauktae" )** over Gujarat region moved northeastwards with a speed of about 07 kmph during past 06 hours, weakened into a **Depression** and lay centred at 0530 hours IST of today, the 19<sup>th</sup> May, 2021 near latitude 24.3°N and longitude 73.3°E over **south Rajasthan and adjoining Gujarat region**, about 60 kms west-southwest of Udaipur (Rajasthan) and 110 km east-northeast of Deesa (Gujarat region). It is very likely to move northeastwards and weaken gradually into a Well Marked Low pressure area during next 12 hours. The remnant of the system is very likely to move further northeastwards across Rajasthan to west Uttar Pradesh during the next two days.

**Warnings:**

**(i) Rainfall:**

- Light to moderate rainfall at most places with heavy to very heavy falls at isolated places very likely over East Rajasthan on 19<sup>th</sup> May.
- The interaction of the remnant low pressure system with a trough in westerlies associated with a Western Disturbance is very likely to cause light to moderate rainfall at most places with heavy to very heavy falls and extremely heavy falls at isolated places over Uttarakhand, heavy to very heavy rainfall at isolated places over Himachal Pradesh, Haryana, Chandigarh & Delhi, West Uttar Pradesh and Heavy rainfall at isolated places over Punjab, East Uttar Pradesh, north Madhya Pradesh and West Rajasthan during next 24 hours.

**(ii) Wind warning**

- Squally wind speed reaching 45-55 kmph gusting to 65 kmph is likely to prevail over East Rajasthan and adjoining Gujarat region during next 12 hours.

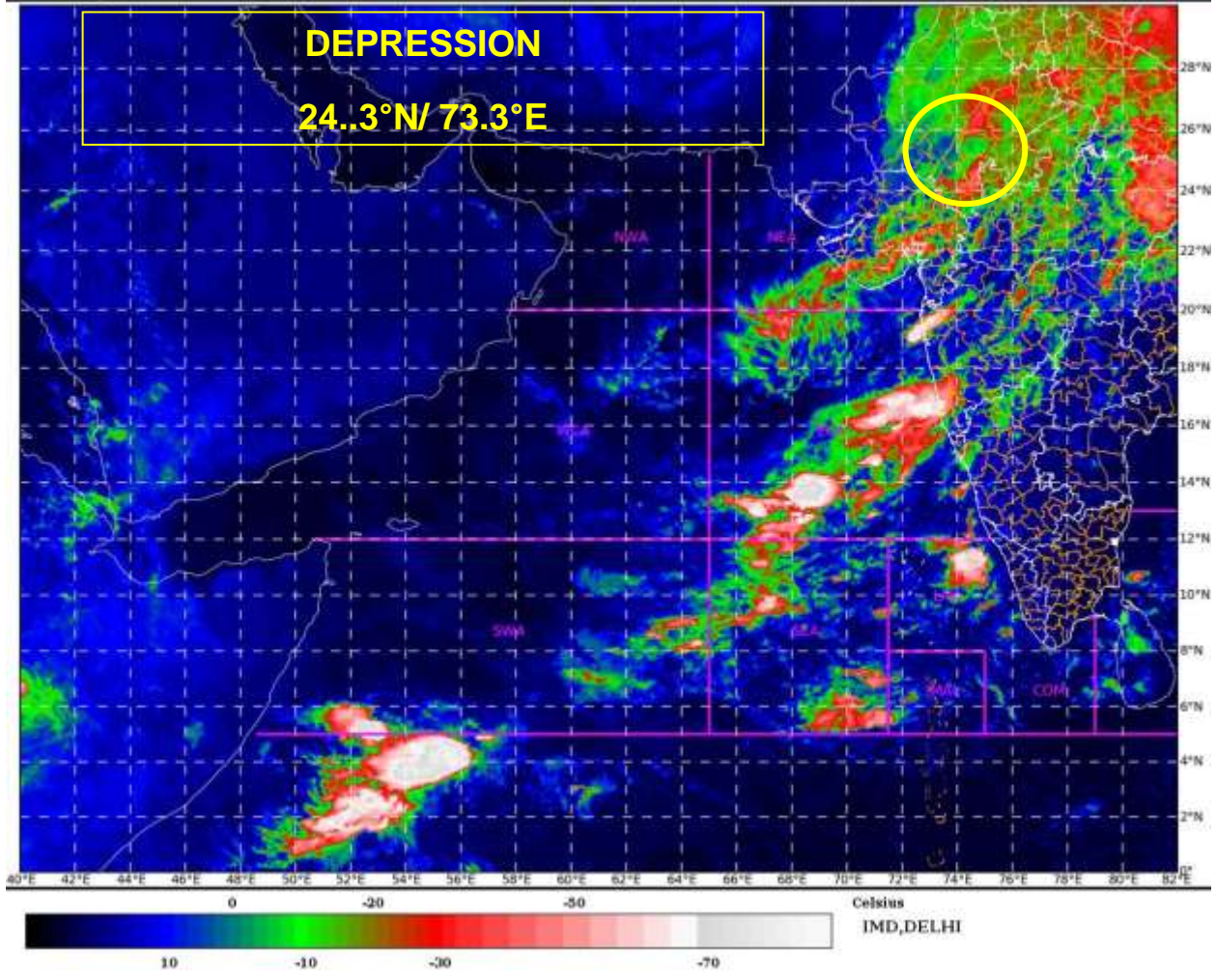
**The next bulletin will be issued at 1130 hrs IST of 19<sup>th</sup> May, 2021.**

**(Sunitha Devi.S)  
Scientist-F, RSMC, New Delhi**

Copy to: MC Jaipur /ACWC Mumbai /CWC Ahmedabad.

SAT : INSAT-3D IMG  
IMG\_TIRI\_TEMP 10.8 um  
ARABIAN SEA

19-05-2021/(0100 to 0126) GMT  
19-05-2021/(0630 to 0656) IST







**OBSERVED AND FORECAST TRACK ALONGWITH CONE OF UNCERTAINTY OF DEPRESSION (REMNANT OF ESCS "TAUKTAE") OVER SOUTH RAJASTHAN AND ADJOINING GUJARAT REGION BASED ON 0000 UTC OF 19TH MAY, 2021**



ig/GIS/previewcyclone.html#

**DATE/TIME IN UTC**

IST=UTC + 0530

L: LOW PRESSURE AREA

WML: WELL MARKED LOW PRESSURE AREA

D: DEPRESSION (17-27 KT)

DD: DEEP DEPRESSION (28-33 KT)

CS: CYCLONIC STORM (34.47 KT)

SCS: SEVERE CYCLONIC STORM (48-63KT)

VSCS: VERY SEVERE CYCLONIC STORM (64-89 KT)

ESCS: EXTREMELY SEVERE CYCLONIC STORM (90-119 KT)

SuCS: SUPER CYCLONIC STORM ( $\geq$  120 KT)

● LESS THAN 34 KT

○ 34.47 KT

○  $\geq$  48 KT

— OBSERVED TRACK

— FORECAST TRACK

▲ CONE OF UNCERTAINTY